

**MBASS30** is the system with the many different sampling methods



- **Microbiological air sampling** with the air sampling heads **LKS100** and **LKS 30**
- **Microbiological particle sampling** for detect the overall spore (cultivable and non-cultivable) in the air with the particle sampler **PS 30**
- **Filtration** on a sterile 80 mm gelatine filter with the Filteradapter **FA 30**
- **Sampling** of antigenic and allergenic proteins in the air with allergen sampler **AS100**



### Applications

**MBASS30** - ideal for microbiological monitoring of the air:

- for examinations of microbiological loads indoors in expert surveys and in building biology
- in clean rooms in the pharmaceutical industry
- in hygienically-sensitive production areas and facilities in the food industry
- in medical environments with very stringent requirements
- for hygiene testing of air-conditioning systems

### Performance specifications

**Portable** - Battery operation, more than 22,000 litres air sampling with full charge  
- Compact dimensions

**International** - Fast battery charger for 100 - 240 V/AC / 50 - 60 Hz  
- Operator guidance in English and German  
- PC Software for datat transfer in English and German

**Easy to handle** - Smear-resistant membrane keyboard with 4 keys  
- Three quick access volume accumulators, easily modifiable  
- Sample volumes from 10 to 9990 litres  
- Adjustable start delay

**Reliable** - **MBASS30** with air sampler head is validated  
- Electronic volume flow adjustment 30 l/min and 100 l/min  
- Optionally available with **DUAL sensor** to enhance internal monitoring  
- Brushless fan motor

**Multifunctional** - Four different microbiological sampling methods  
- Comfortable sampling with PU foam cylinder for SVOC's (with air sampler head and transverse adapter)

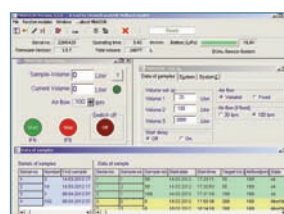
**Robust** - Anodised extruded aluminum sheath  
- 24 month warranty (battery 12 month)



Take professional sampling with **MBASS30**  
The picture shows optional accessories



With **MBASS30**, the air sampler head **LKS100** or **LKS 30** and the transverse adapter can 50 mm PU-foam cylinder be loaded for chemical sampling of SVOC's with an air flow rate of 30 l/min. (SVOC means semi volatile organic compounds)



The PC software **MBASS30.EXE** for remote control the **MBASS30** and export the saved sampling datais is included in delivery

### Included in delivery



**MBASS30** comes complete with

- Sampling heads based on the order configuration
- Super-fast charger
- Manual
- USB cable
- Software MBASS30.EXE for configuration, remote control and data exchange

Optionally available:

- DUAL sensor, integrated in **MBASS30**
- Handling cases in different colors

The sampling heads are included or optional, depending on the order configuration

### Technical data

Matching sampling heads	Air sampling head <b>LKS100</b> , air sampling head <b>LKS 30</b> , particle sampling head <b>PS 30</b> , filter adapter <b>FA 30</b> and allergen sampler <b>AS100</b>
Air flow	30 l/min and 100 l/min controlled and monitored
Sample air volumes	Preselectable from 10 to 9990 litres
Start delay	1 second to 60 minutes
Data storage	1000 sets of sampling data
Operator guidance	English / German
Control	Membrane keyboard with 4 keys
Display	Colored illuminated LCD display
Flow measurement	Dynamic pressure measurement with temperature-compensated differential pressure sensor
Air conveying device	High-performance fan with brushless motor
Power supply	Lithium Polymer battery 14.4 Volt, 3800 mAh, 56.2 Wh
Super fast charger	100 to 240 Volt AC, charging current 2 A
Buffer battery for real-time clock	Lithium button cell CR2032
Dimensions [mm] (B x H x D)	180 x 160 x 255 without sampling head 180 x 175 x 255 with sampling head
Weight	2330 g without sampling head, 2730 g with air sampling head 2930 g with particle sampler head, 2650 g with filter adapter
Tripod socket	UNC 1/4 inch (photo) and UNC 3/8 inch (microphone)
EC conformity	Conforms to EU guidelines on electromagnetic compatibility
Calibration interval	After 150 hours sampling time, but minimum of every 2 years
Warranty	24 month, battery: 12 month
Note	Subject to technical modifications

### Ordering information

Configurations	Article-No.	Configurations / accessories	Article-No.
<b>MBASS30</b> with <b>LKS 30</b> and <b>PS 30</b> sampling heads	01-130E	<b>MBASS30</b> without sampling heads	01-135E
<b>MBASS30</b> with <b>LKS 30</b> air sampling head	01-132E	Optional dual sensor integrated in <b>MBASS30</b>	01-138E
<b>MBASS30</b> with <b>LKS100</b> air sampling head	01-133E	Handling case for <b>MBASS30</b> in <b>light grey</b>	01-250E
<b>MBASS30</b> with <b>LKS100</b> and <b>PS 30</b> sampling heads	01-134E	Handling case for <b>MBASS30</b> in <b>anthracite</b>	01-255E

Issue 2014/12

